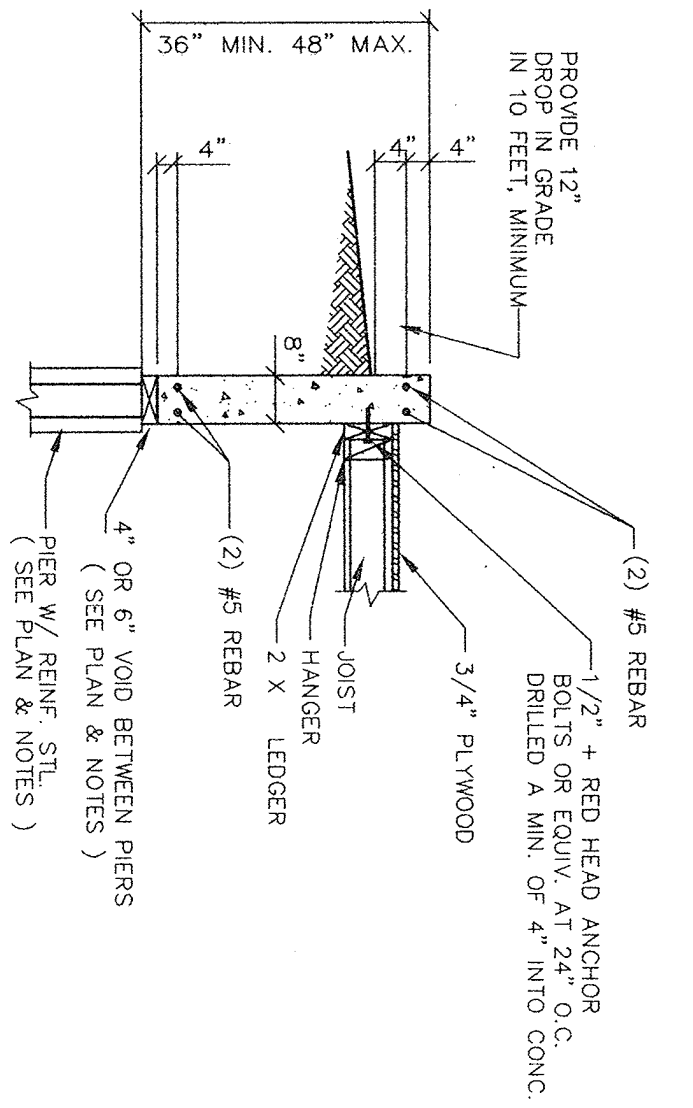
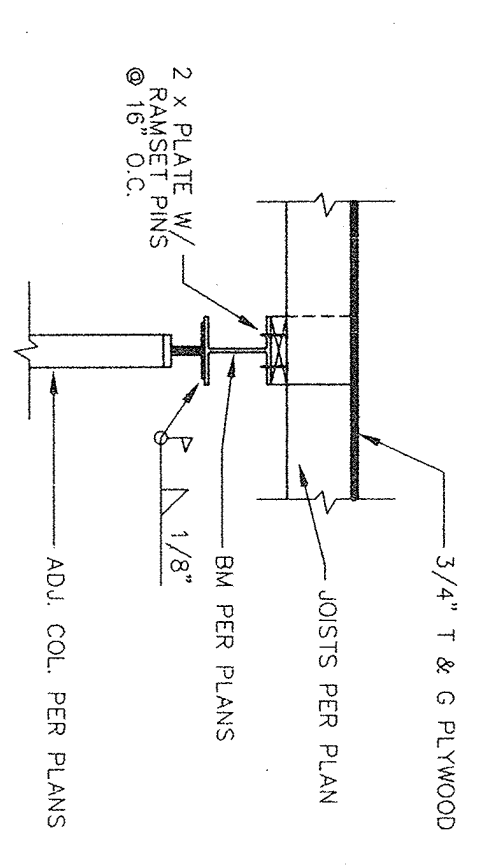


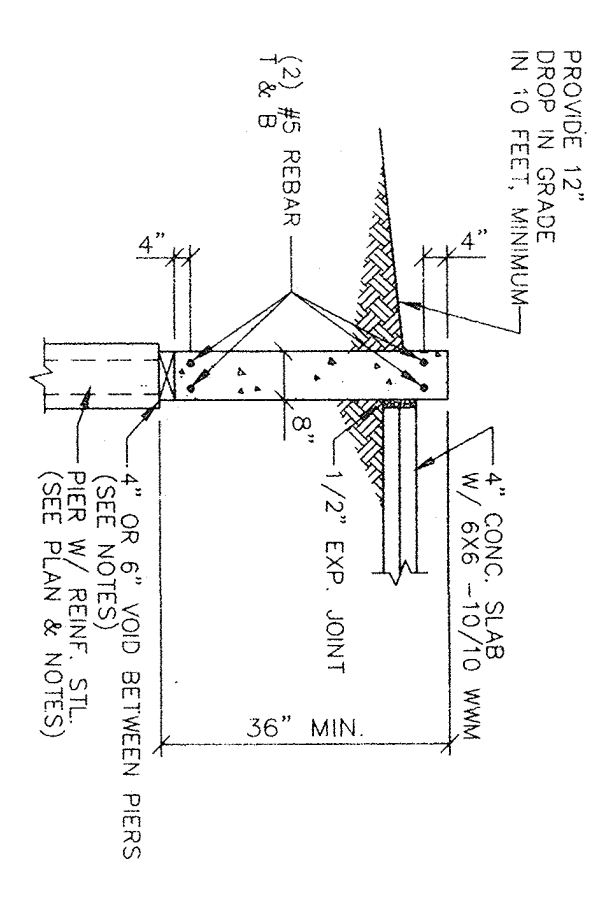
**** SEE FOUNDATION PLAN (SHEET ONE) FOR SPECIFICATIONS**



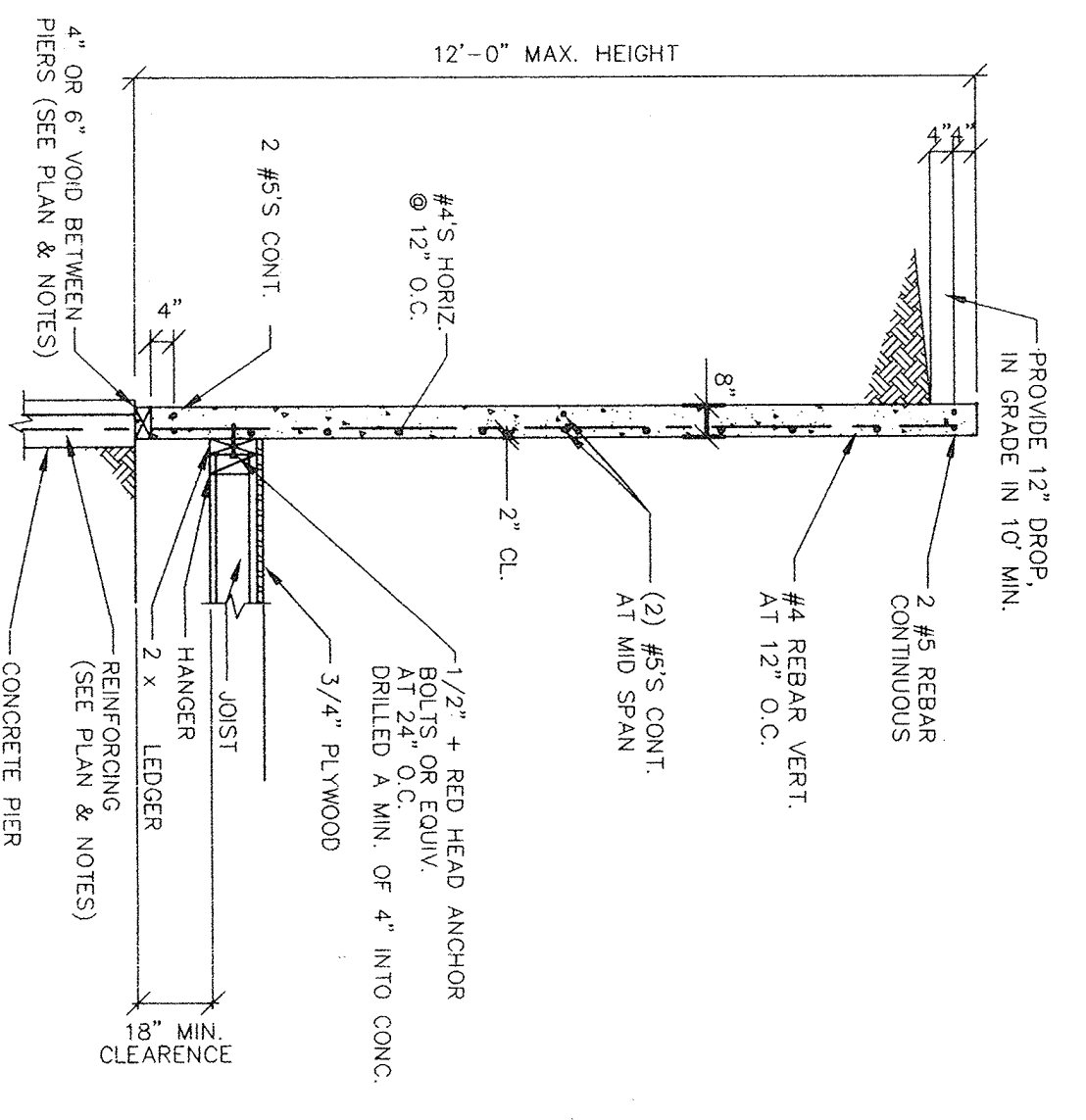
202 DETAIL
WITH WOOD STRUCTURAL FLOOR



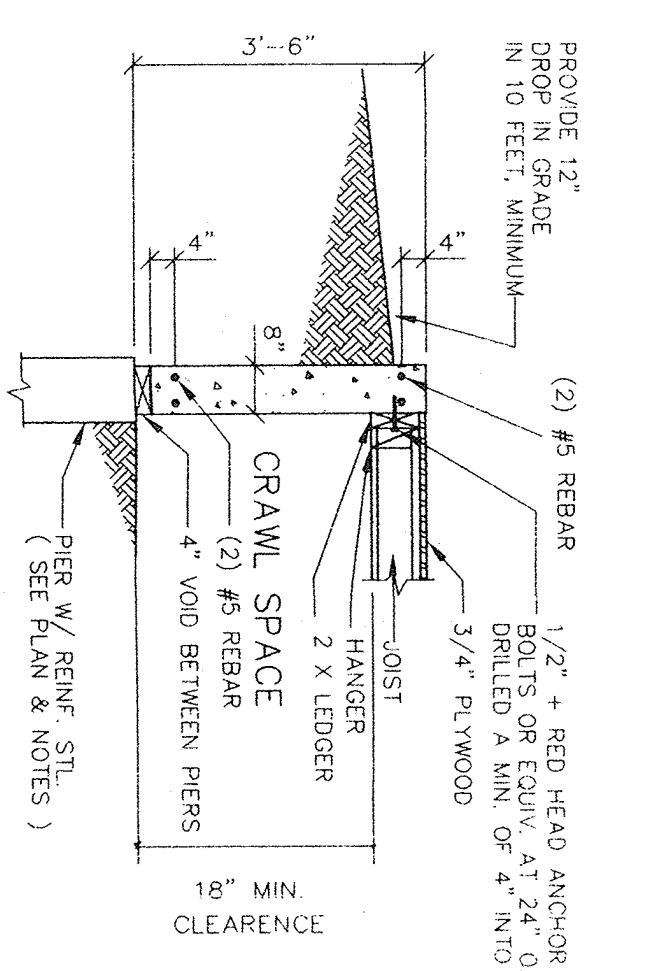
203 DETAIL
WITH WOOD STRUCTURAL FLOOR



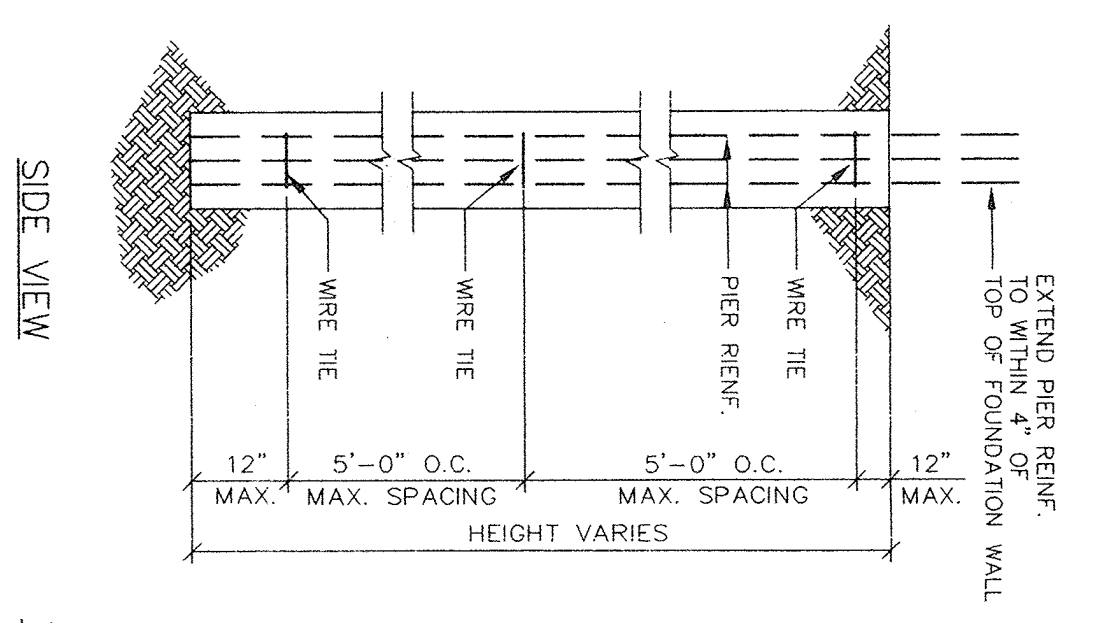
206 DETAIL
WITH WOOD STRUCTURAL FLOOR



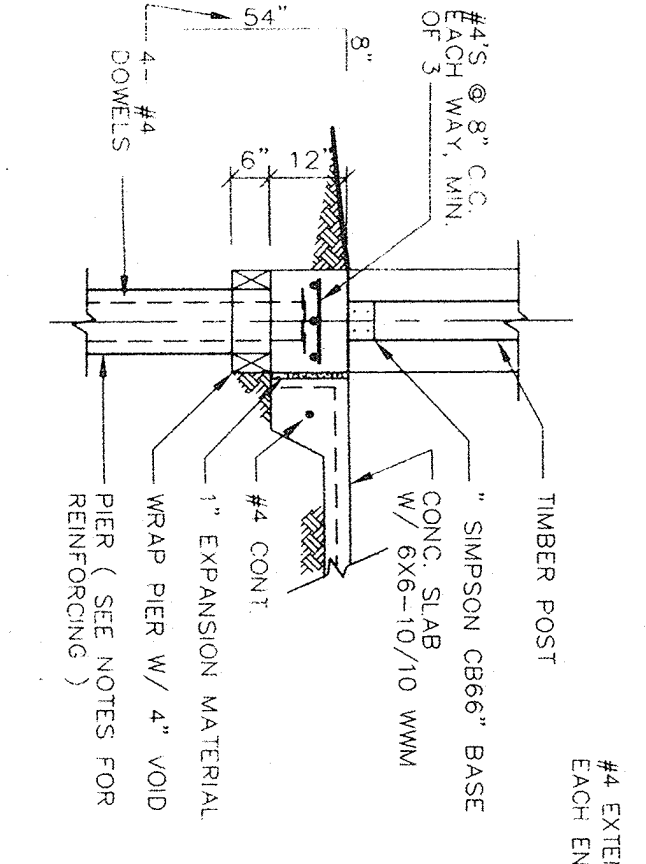
207 DETAIL



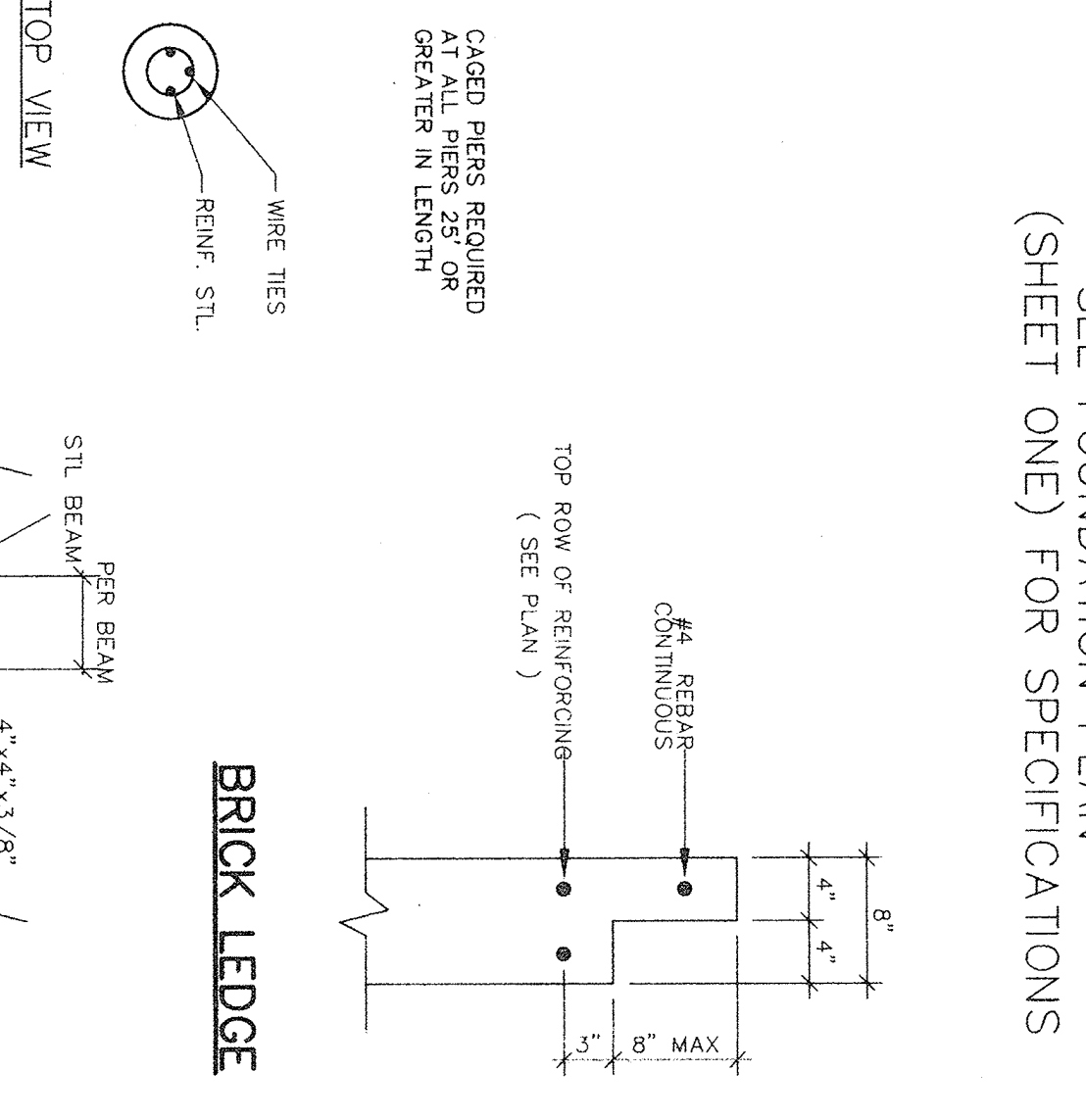
209 DETAIL



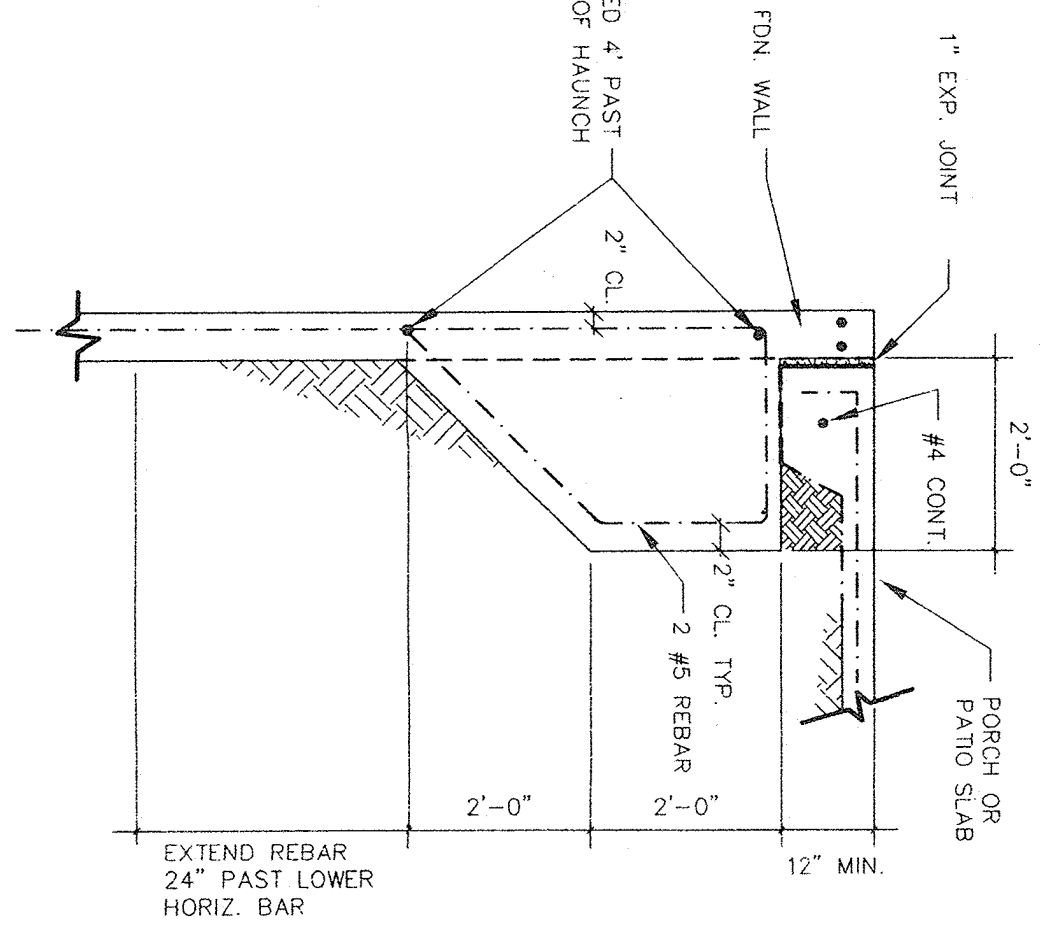
218 DETAIL



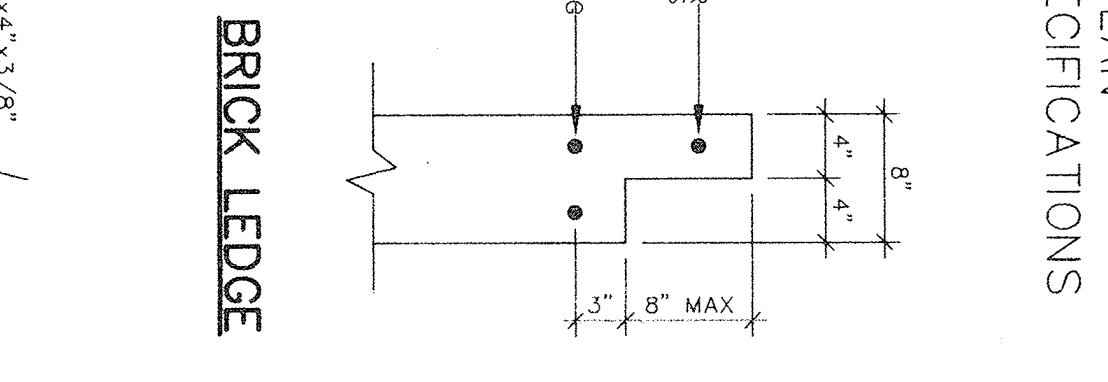
220 DETAIL



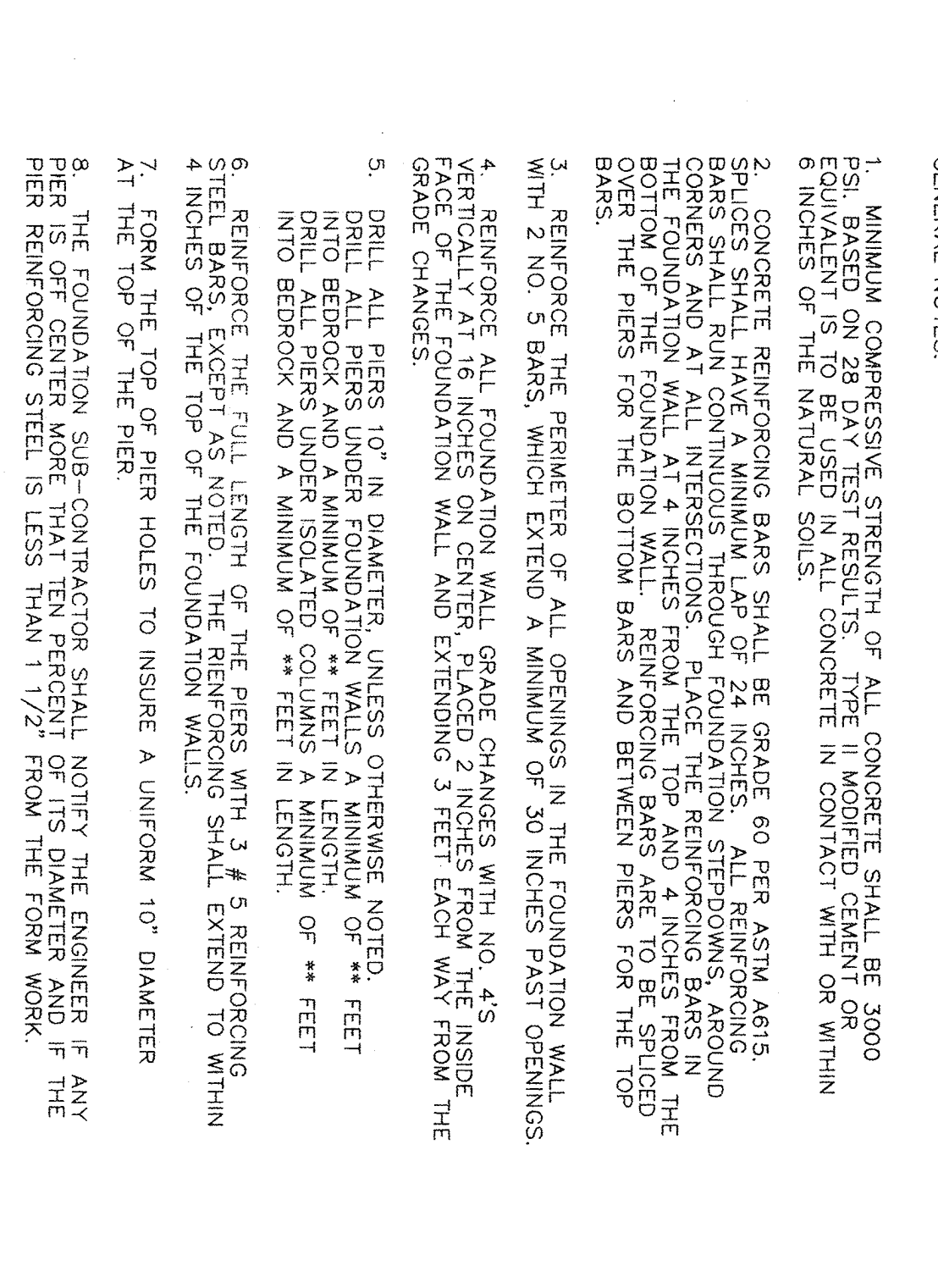
222A DETAIL
COUNTERFORT WALL SECTION



223 DETAIL



224 DETAIL



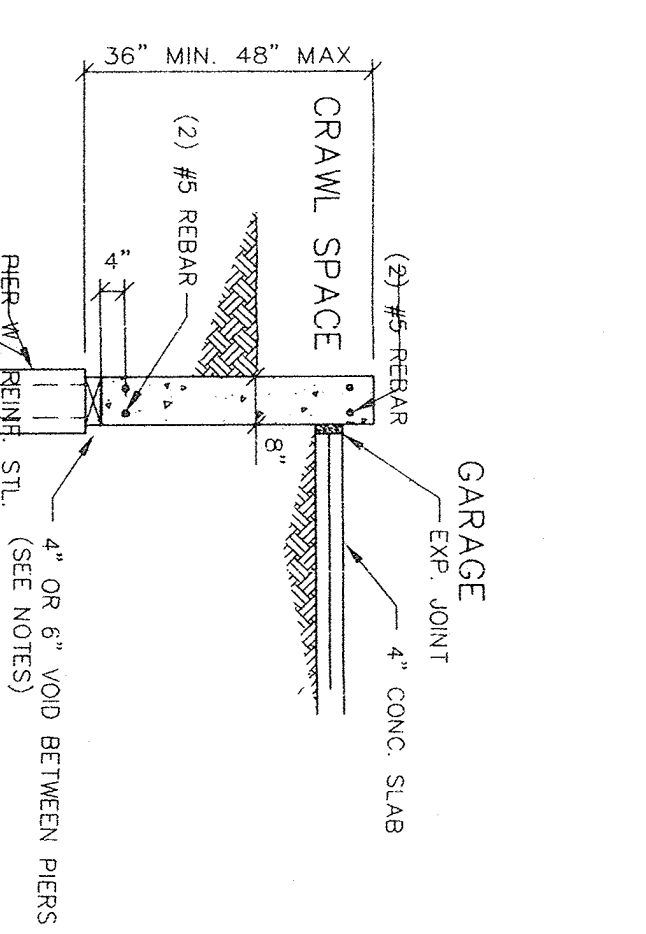
225 DETAIL

OPENING	UNTEL	BEARING	REMARKS
3'-6\"/>			

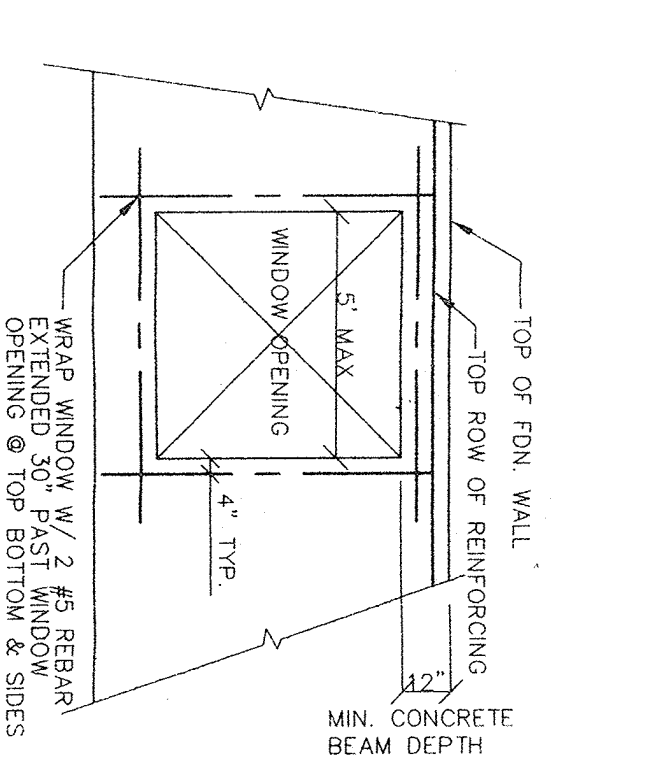
GENERAL NOTES:

- MINIMUM COMPRESSIVE STRENGTH OF ALL CONCRETE SHALL BE 3000 PSI, BASED ON 28 DAY TEST RESULTS. TYPE II MODIFIED CEMENT OR EQUIVALENT IS TO BE USED FOR ALL CONCRETE IN CONTACT WITH OR WITHIN 6 INCHES OF THE EXISTING SOILS.
- CONCRETE REINFORCING BARS SHALL BE GRADE 60 PER ASTM A615. BARS SHALL RUN CONTINUOUS THROUGH FOUNDATION STEPS, CORNERS AND AT ALL INTERSECTIONS. PLACE THE REINFORCING BARS IN THE FOUNDATION WALL AT 4 INCHES FROM THE TOP AND 4 INCHES FROM THE BOTTOM OF THE FOUNDATION WALL. PROVIDE 1\"/>

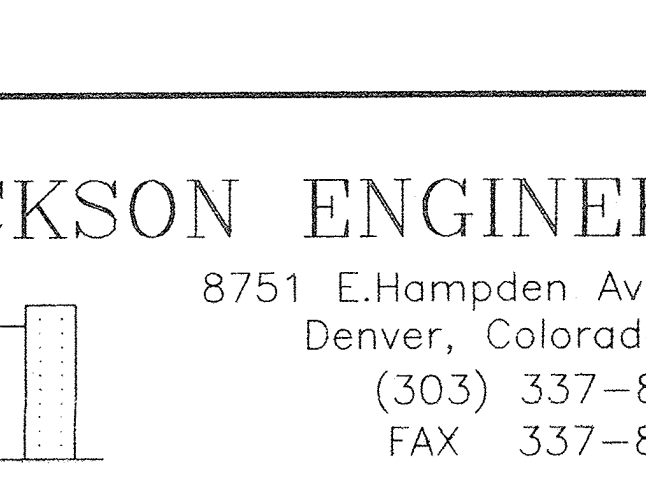
WALL HEIGHT	VERTICAL STEEL	HORIZONTAL STEEL
0' - 3' - 11"	NONE	2 #5'S TOP AND BOTTOM
4' - 0" - 9' - 11"	#4'S @ 18" O.C.	2 #5'S TOP AND BOTTOM + #4'S @ 12" O.C.
10' - 0" - 12' - 0"	#4'S @ 12" O.C.	2 #5'S TOP, BOTTOM AND MIDDLE + #4'S @ 12" O.C.



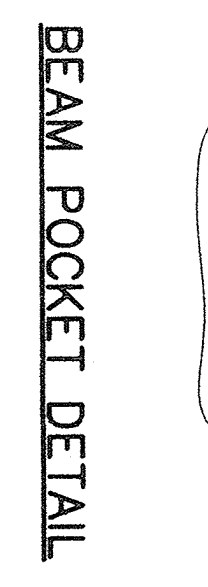
204A DETAIL



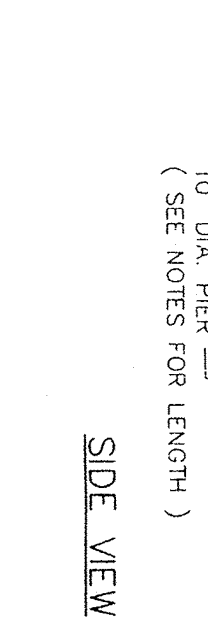
205 DETAIL



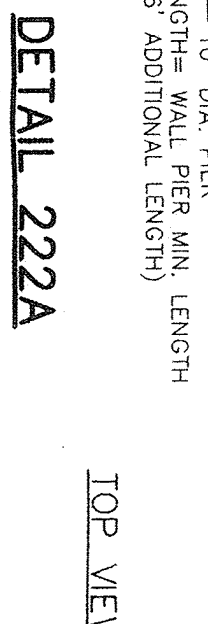
204 DETAIL



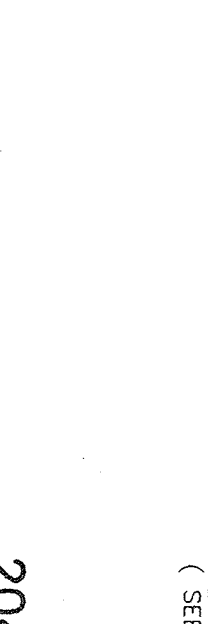
205 DETAIL



206 DETAIL



207 DETAIL



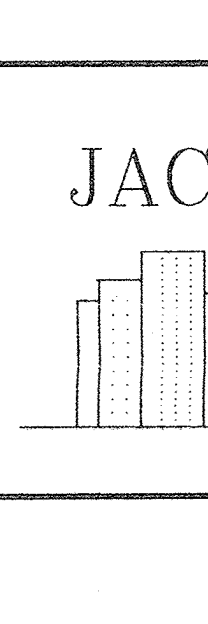
208 DETAIL



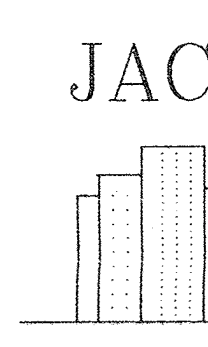
209 DETAIL



210 DETAIL



211 DETAIL



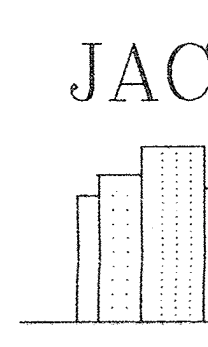
212 DETAIL



213 DETAIL



214 DETAIL



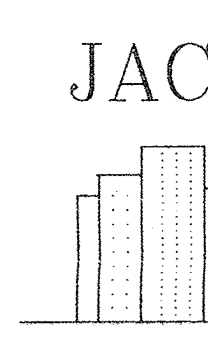
215 DETAIL



216 DETAIL



217 DETAIL



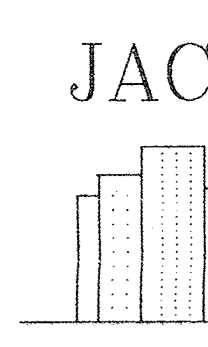
218 DETAIL



219 DETAIL



220 DETAIL



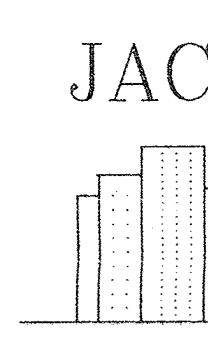
221 DETAIL



222 DETAIL



223 DETAIL



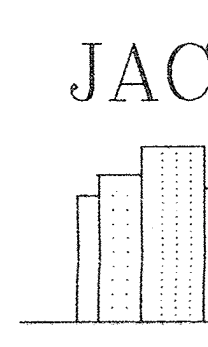
224 DETAIL



225 DETAIL



226 DETAIL



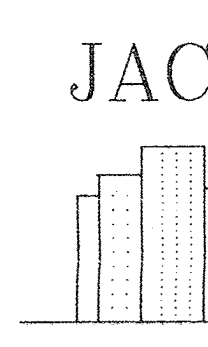
227 DETAIL



228 DETAIL



229 DETAIL



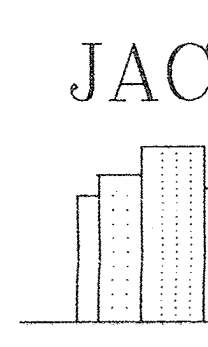
230 DETAIL



231 DETAIL



232 DETAIL



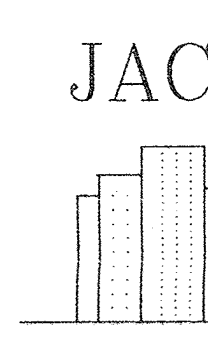
233 DETAIL



234 DETAIL



235 DETAIL



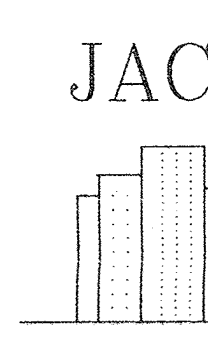
236 DETAIL



237 DETAIL



238 DETAIL



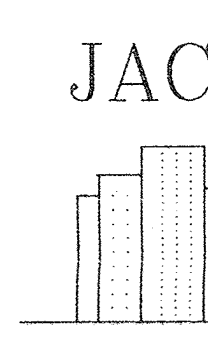
239 DETAIL



240 DETAIL



241 DETAIL



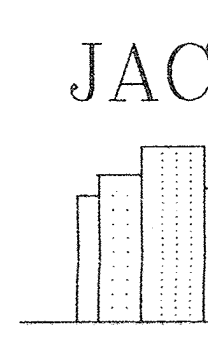
242 DETAIL



243 DETAIL



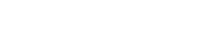
244 DETAIL



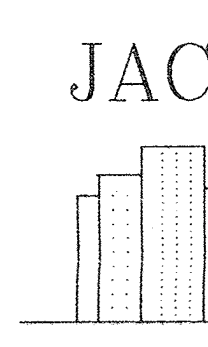
245 DETAIL



246 DETAIL



247 DETAIL



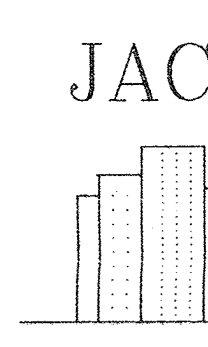
248 DETAIL



249 DETAIL



250 DETAIL



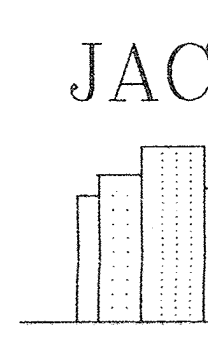
251 DETAIL



252 DETAIL



253 DETAIL



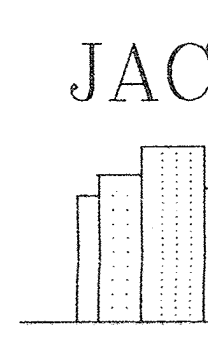
254 DETAIL



255 DETAIL



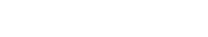
256 DETAIL



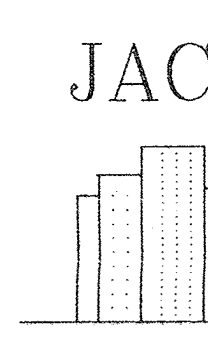
257 DETAIL



258 DETAIL



259 DETAIL



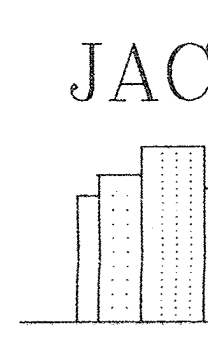
260 DETAIL



261 DETAIL



262 DETAIL



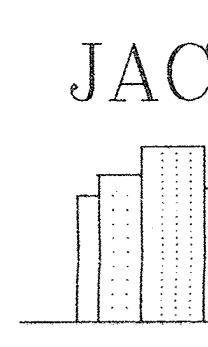
263 DETAIL



264 DETAIL



265 DETAIL



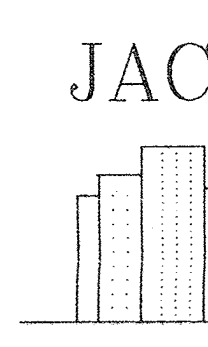
266 DETAIL



267 DETAIL



268 DETAIL



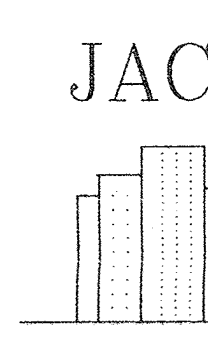
269 DETAIL



270 DETAIL



271 DETAIL



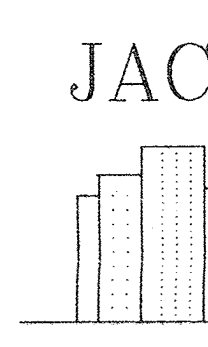
272 DETAIL



273 DETAIL



274 DETAIL



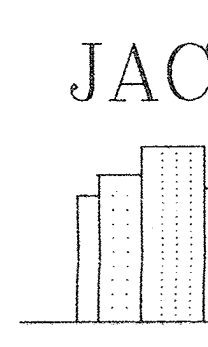
275 DETAIL



276 DETAIL



277 DETAIL



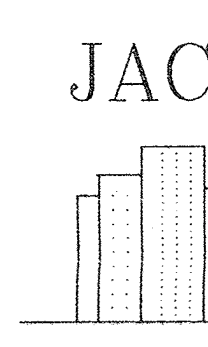
278 DETAIL



279 DETAIL



280 DETAIL



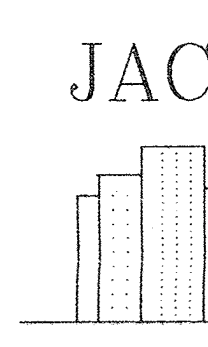
281 DETAIL



282 DETAIL



283 DETAIL



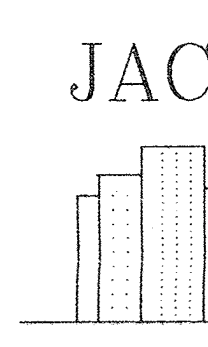
284 DETAIL



285 DETAIL



286 DETAIL



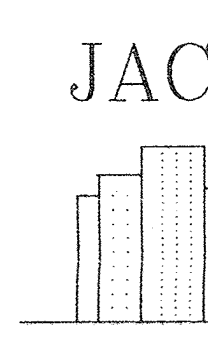
287 DETAIL



288 DETAIL



289 DETAIL



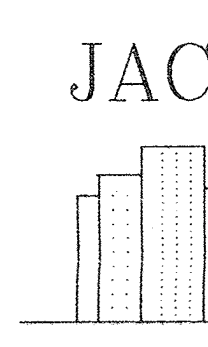
290 DETAIL



291 DETAIL



292 DETAIL



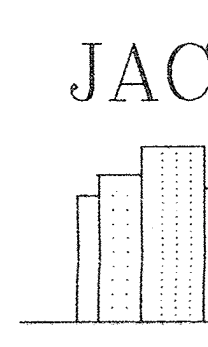
293 DETAIL



294 DETAIL



295 DETAIL



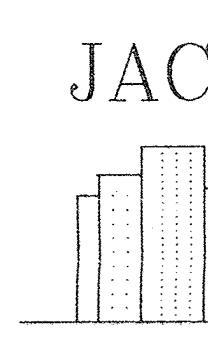
296 DETAIL



297 DETAIL



298 DETAIL



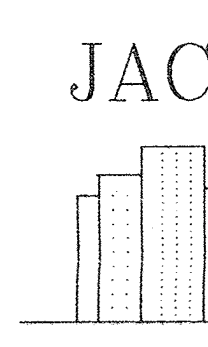
299 DETAIL



300 DETAIL



301 DETAIL



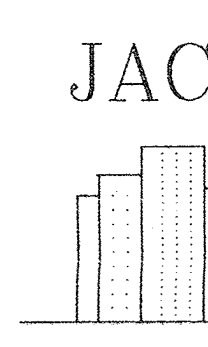
302 DETAIL



303 DETAIL



304 DETAIL

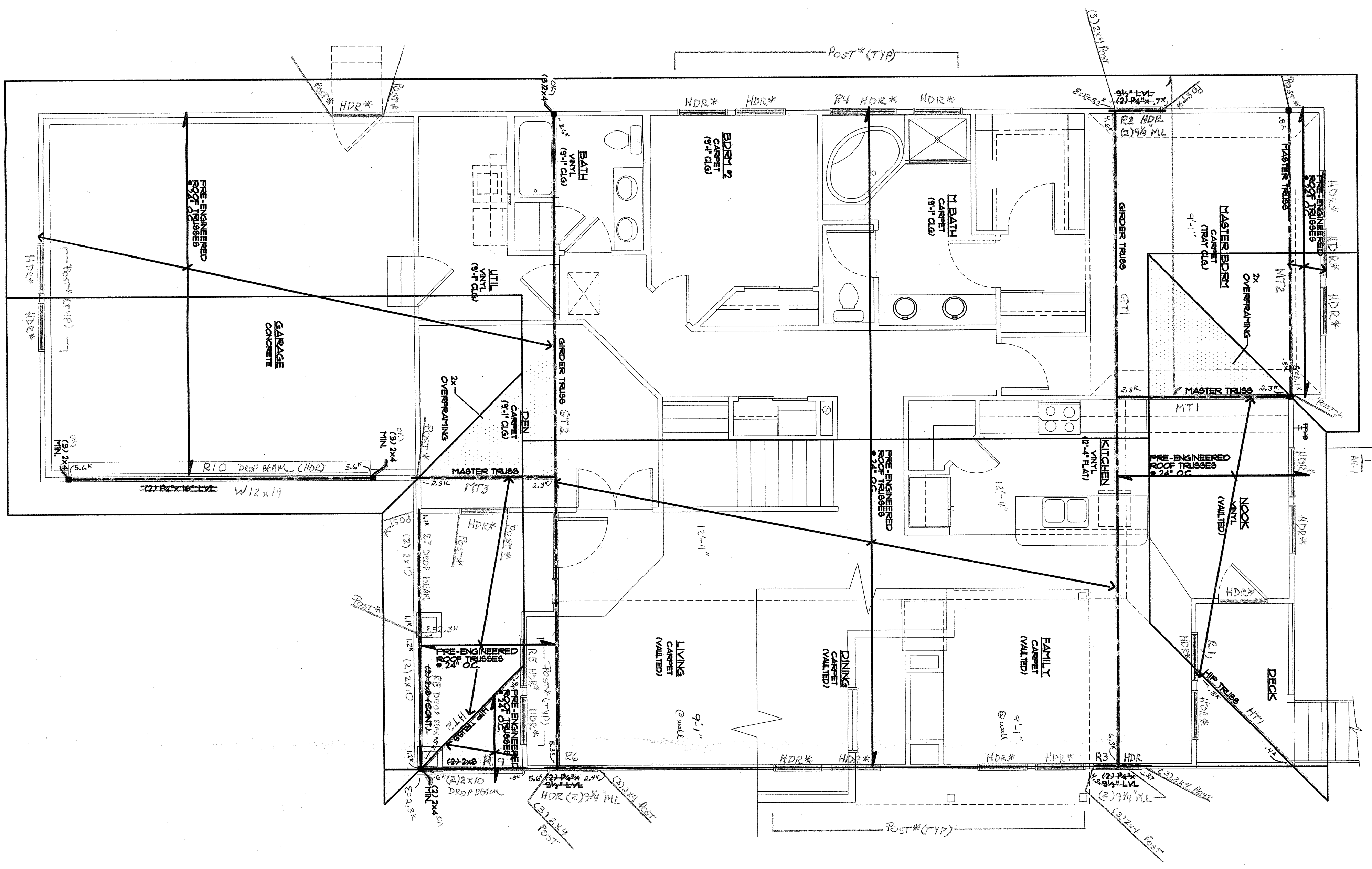
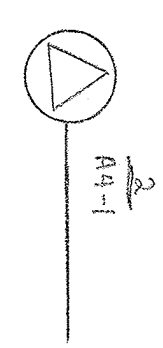


305 DETAIL

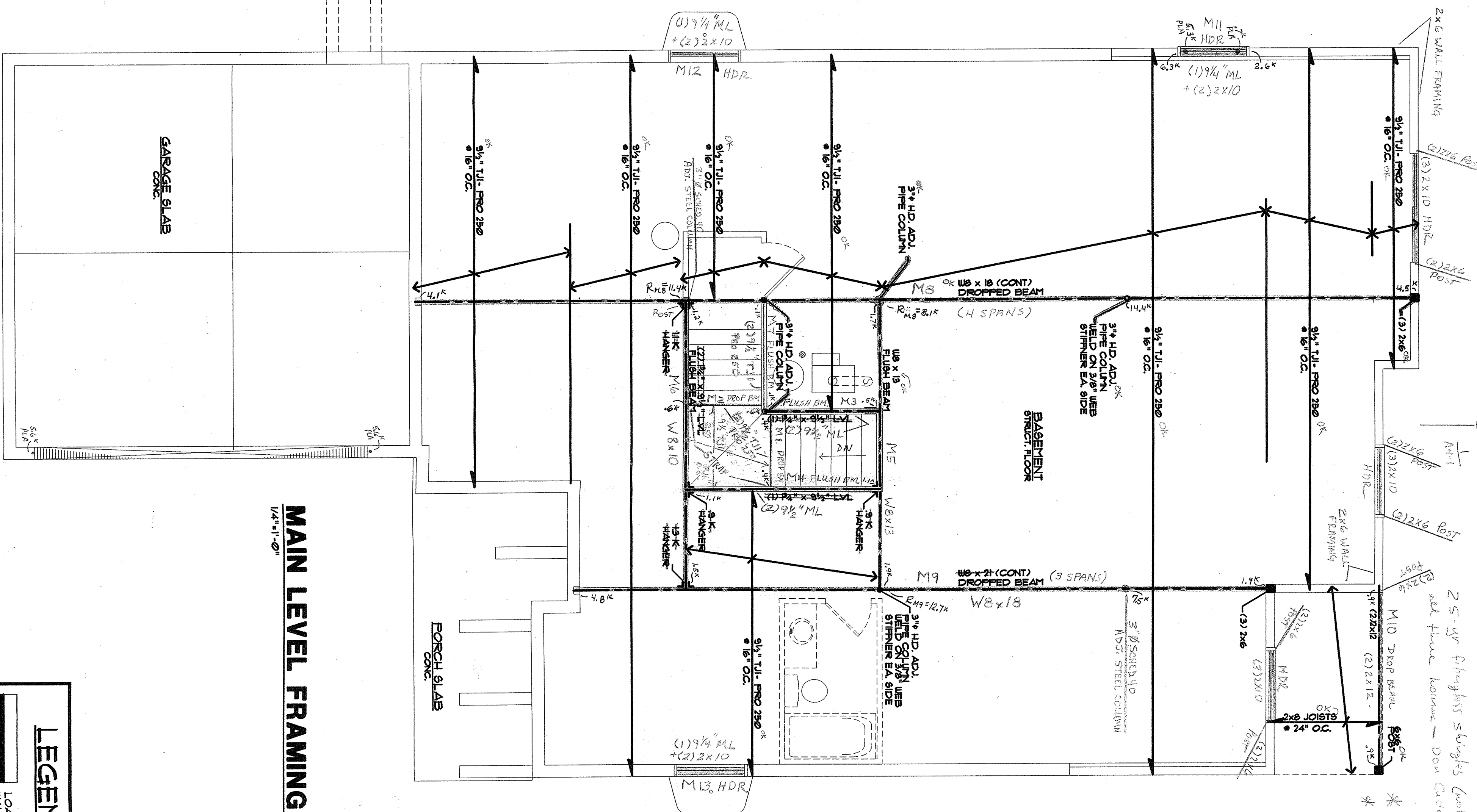
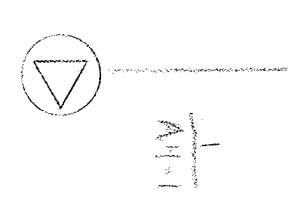


306 DETAIL





ROOF FRAMING PLAN
1/4"=1'-0"

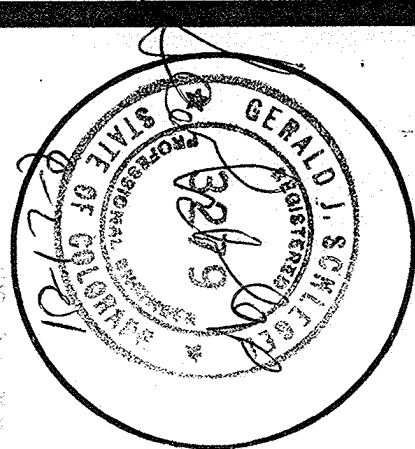


MAIN LEVEL FRAMING PLAN
1/4"=1'-0"

FRAMING NOTES:
ALL FLOOR JOISTS TO BE 1 1/2" x 9 1/2" @ 16" O.C. - UON.
ALL DOOR/WINDOW/OPENING HEADERS TO BE (2) 2x10 MIN. UON.
PROVIDE MULTIPLE STUD POSTS AT THE ENDS OF ALL BEAMS AND HEADERS. POSTS TO BE (2) 2x4 MIN. UON.

LEGEND	
	LOAD BEARING WALL
	MULTIPLE STUD AS INDICATED
	TRUSS HANGER
	STEEL COLUMN AS INDICATED

PROJECT #10-5003

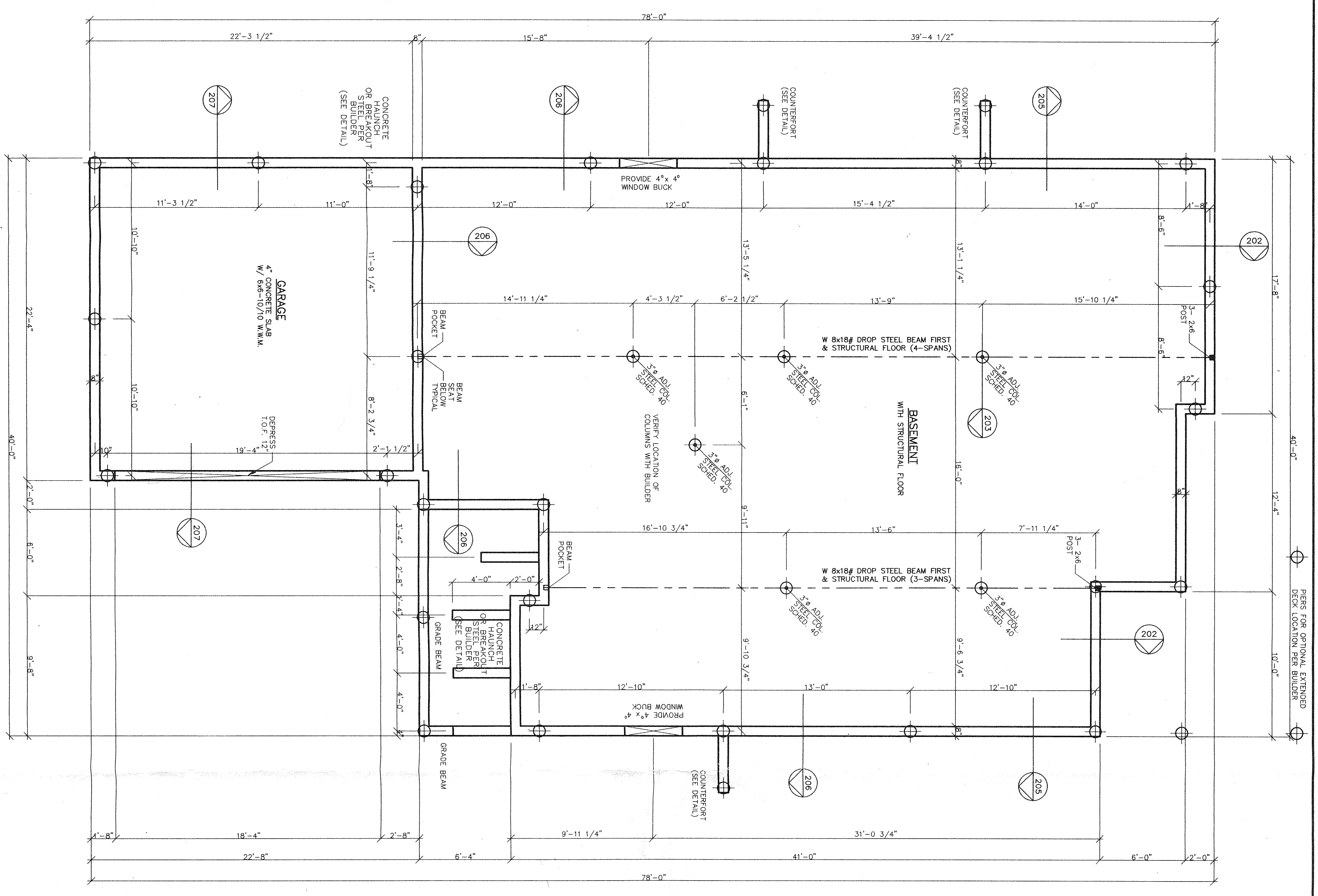


STONETREE on SMOKY HILL
ARAPAHOE COUNTY, COLORADO

KEPHART ARCHITECTS
770 SHERMAN STREET
DENVER, COLORADO 80203

Number	Date	Issue
1	7.30.01	REVIEW SET
2	8.20.01	SUBMITTAL PKG.

Project Architect	RLR
Project Designer	MK
Date	02.22.00
Job Number	200005
Drawn By	JLA
Checked By	
Title	FRAMING SCHEMATIC PLANS
Sheet Number	PLAN "R"
S1.1	

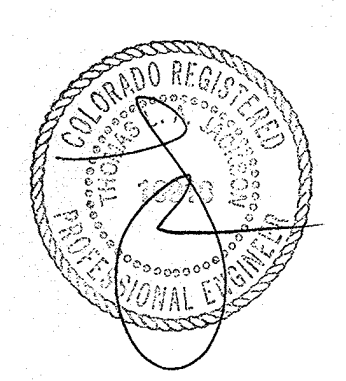


FOUNDATION SPECIFICATIONS

WALL HEIGHTS (MIN.-MAX.)	LOWER	UPPER/SOLATED
3'-0"-12'-0"	12"	12"
WALL THICKNESS	3-#5	3-#5
WALL VOID	20'-0"	26'-0"
PIERS	10'-0"	10'-0"
PIERS DIAMETER		
PIERS REINFORCEMENT		
PIERS LENGTH (MIN.)		
PIERS PENETRATION (BEDROCK)		

ALL DIMENSIONS MUST BE VERIFIED BY BUILDER PRIOR TO START OF CONSTRUCTION.

JACKSON ENGINEERS INC.
 8751 E. Hampden Ave., Suite B-2
 Denver, Colorado 80231
 (303) 337-8888
 FAX 337-8842



FOUNDATION PLAN
PLAN R
STONETREE ON SMOKY HILL
ARAPAHOE COUNTY, COLORADO

FOR: DON CADE PROJECT NO. 10-5003

DATE: 9-19-01	REVISED:
SOIL REPORT BY: GROUND ENGINEERING	
SOIL REPORT NO. 00-0125	
SHEET NO. 1 of 2	