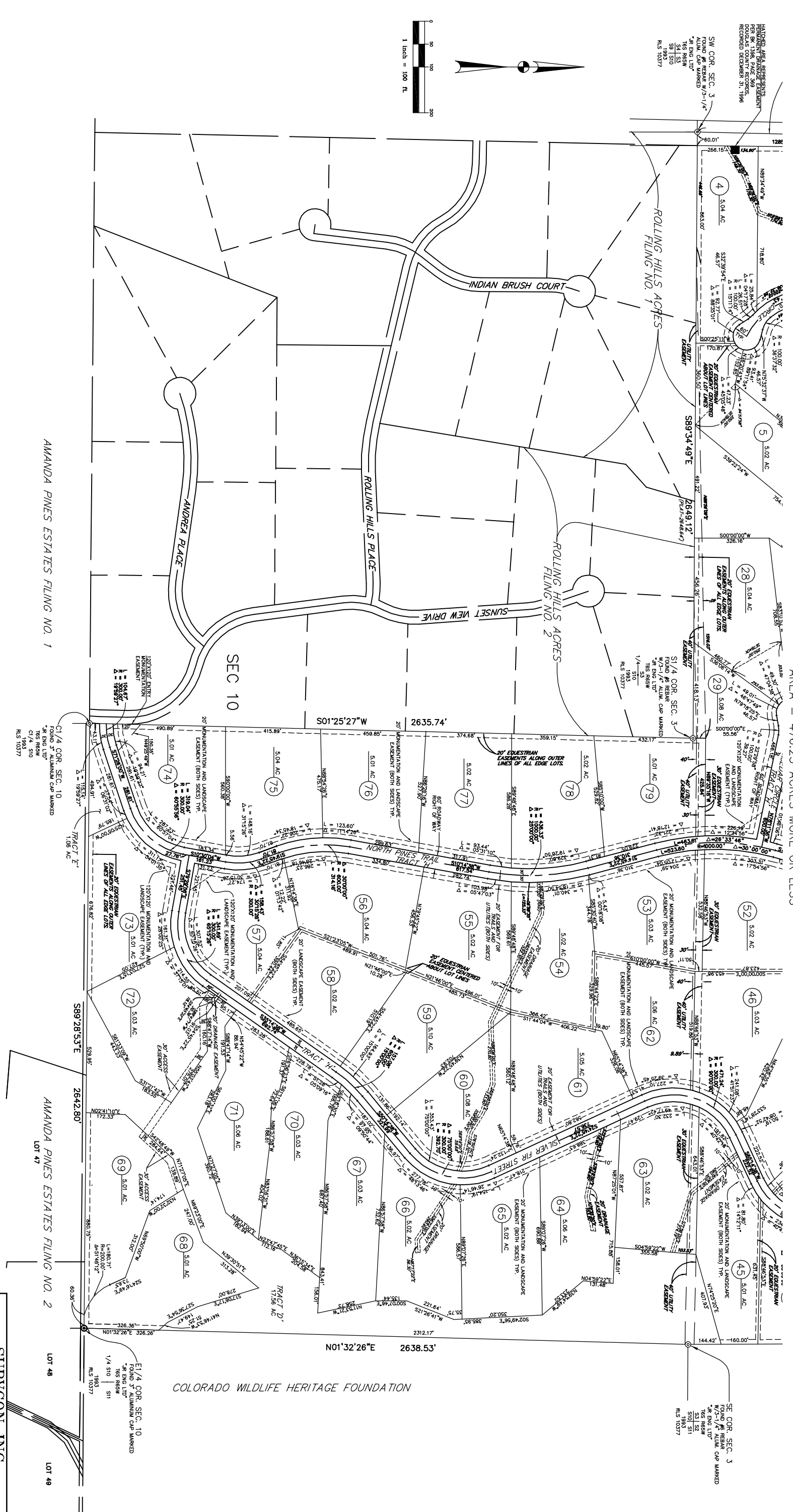


AMENDMENT NO. 3  
**SKY RIM**

FORMERLY KNOWN AS AMANDA PINES  
 NORTH ESTATES, AMENDMENT NO. 1  
 A SUBDIVISION OF THE S1/2 OF SECTION 3 AND THE NE1/4  
 OF SECTION 10, T6S, R65W, OF THE 6TH P.M., COUNTY OF ELBERT,  
 STATE OF COLORADO  
 AREA = 476.25 ACRES MORE OR LESS



**SURYGON INC.**  
 PROFESSIONAL SURVEYORS  
 7800 E. DORADO PLACE, STE. 101  
 GREENWOOD VILLAGE, CO. 80111  
 PH. (303) 858-0404

SCALE:	1"=100'	JOB NO.	1033-02
DATE:	12-27-00	DRAWING:	4.1032-02.DRAWING(3202AP rev)
DRAWN BY:	JEK/BK	SHEET NO.	3 OF 3

REVISION 1: SEPTEMBER 2005.  
 COVER SHEET SIGNATURE BLOCKS, SETBACKS FOR LOTS 18 AND 19.  
 ADD 30' UTILITY EASEMENT AND 30' ACCESS EASEMENT.

THIS DRAWING IS THE PROPERTY OF SURYGON INC. AND MAY BE REPRODUCED OR TRANSMITTED IN ANY FORM OR BY ANY MEANS, ELECTRONIC, MECHANICAL, PHOTOCOPYING, RECORDING, OR BY ANY INFORMATION STORAGE AND RETRIEVAL SYSTEM, WITHOUT THE EXPRESS WRITTEN PERMISSION OF SURYGON INC.