

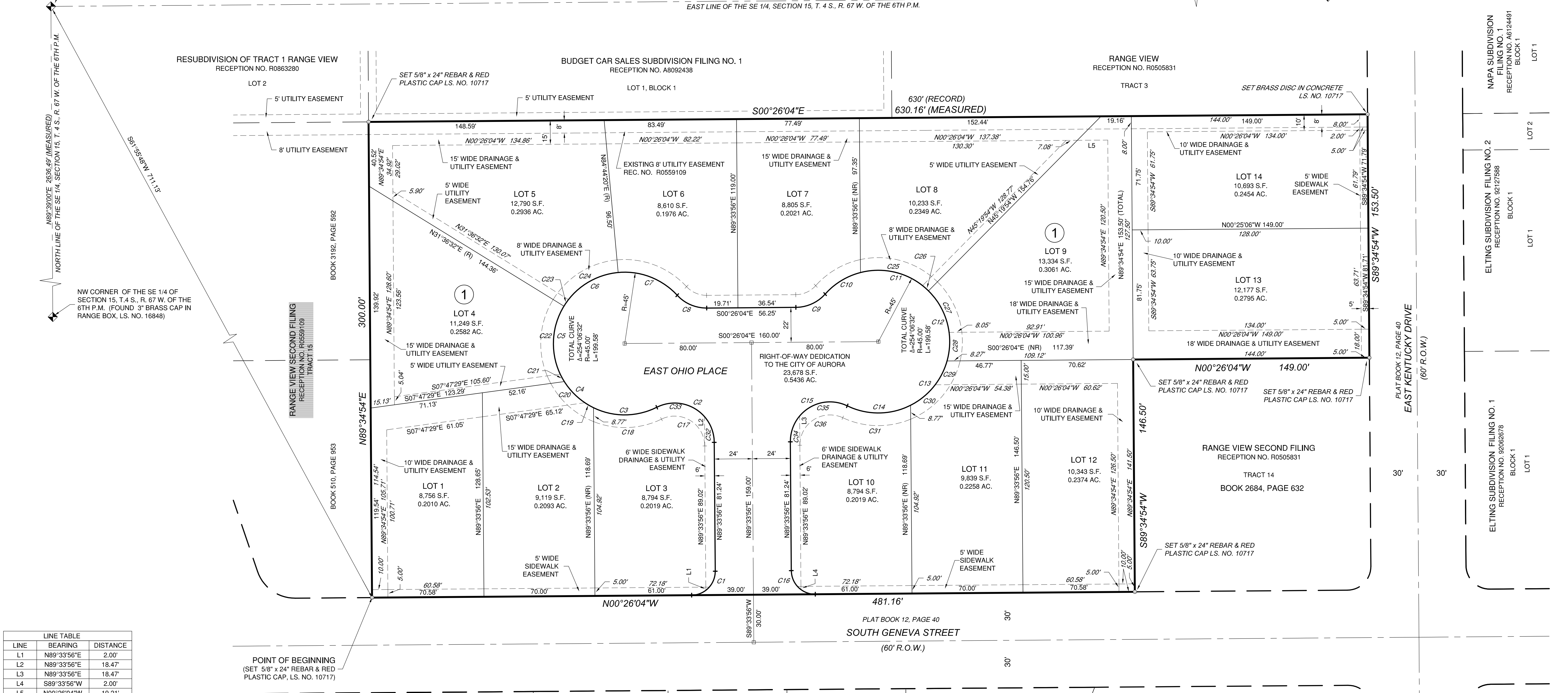
RANGE VIEW ESTATES SUBDIVISION FILING NO. 1

A RESUBDIVISION OF A PART OF TRACTS 14 AND 15, RANGE VIEW SECOND FILING, SITUATED IN THE SE 1/4 OF SECTION 15, T. 4 S., R. 67 W. OF THE 6TH P.M., CITY OF AURORA, ARAPAHOE COUNTY, COLORADO
SHEET 2 OF 2

SE CORNER OF THE SE 1/4 OF SECTION 15, T. 4 S., R. 67 W. OF THE 6TH P.M. (FOUND 3" BRASS CAP IN RANGE BOX, L.S. NO. 16848)

POINT OF COMMENCEMENT
NE CORNER OF THE SE 1/4 OF SECTION 15, T. 4 S., R. 67 W. OF THE 6TH P.M. (FOUND 3" BRASS CAP IN RANGE BOX, L.S. NO. 16419)

S00°26'04"E 2640.60' (MEASURED) (BASIS OF BEARINGS)
EAST LINE OF THE SE 1/4, SECTION 15, T. 4 S., R. 67 W. OF THE 6TH P.M.

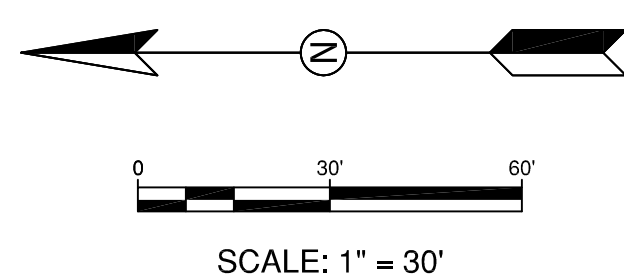


LINE	BEARING	DISTANCE
L1	N89°33'56"E	2.00'
L2	N89°33'56"E	18.47'
L3	N89°33'56"E	18.47'
L4	S89°33'56"W	2.00'
L5	N00°26'04"W	19.21'

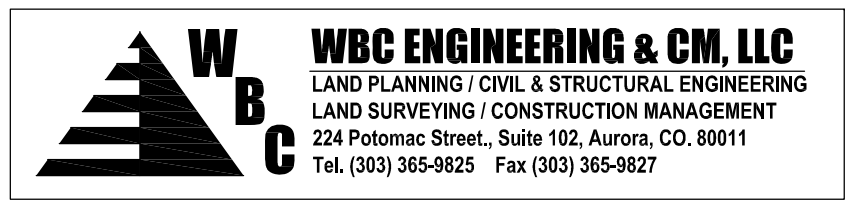
POINT OF BEGINNING
(SET 5/8" x 24" REBAR & RED PLASTIC CAP, L.S. NO. 10717)

Curve Table					Curve Table						
Curve #	Delta	Radius	Length	CHORD BRG	CHORD DST	Curve #	Delta	Radius	Length	CHORD BRG	CHORD DST
C1	90°00'00"	15.00'	23.56'	S45°26'04"E	21.21'	C19	8°00'01"	45.00'	6.28'	S29°57'12"W	6.28'
C2	116°17'11"	25.00'	50.74'	N31°25'20"E	42.47'	C20	23°52'31"	45.00'	18.75'	S45°53'28"W	18.62'
C3	52°40'27"	45.00'	41.37'	S00°23'02"E	39.93'	C21	6°49'18"	45.00'	5.36'	S61°14'23"W	5.35'
C4	31°52'32"	45.00'	25.04'	S41°53'28"W	24.71'	C22	56°57'30"	45.00'	44.73'	N86°52'13"W	42.92'
C5	63°46'48"	45.00'	50.09'	S89°43'08"W	47.55'	C23	6°22'46"	45.00'	5.01'	N55°12'06"W	5.01'
C6	53°07'48"	45.00'	41.73'	N31°49'34"W	40.25'	C24	46°45'03"	45.00'	36.72'	N28°38'11"W	35.71'
C7	52°38'57"	45.00'	41.35'	N21°03'48"E	39.91'	C25	52°46'44"	45.00'	41.45'	N11°53'58"E	40.00'
C8	47°49'21"	25.00'	20.87'	S23°28'36"W	20.27'	C26	6°22'46"	45.00'	5.01'	N41°28'44"E	5.01'
C9	47°49'25"	25.00'	20.87'	S24°20'43"E	20.27'	C27	37°52'36"	45.00'	29.75'	N63°36'24"E	29.21'
C10	33°46'02"	45.00'	26.52'	N31°22'25"W	26.14'	C28	23°08'53"	45.00'	18.18'	S85°52'51"E	18.06'
C11	59°09'30"	45.00'	46.46'	N15°05'21"E	44.43'	C29	21°32'32"	45.00'	16.92'	S63°32'09"E	16.82'
C12	61°01'29"	45.00'	47.93'	N75°10'51"E	45.70'	C30	25°56'32"	45.00'	20.38'	S39°47'37"E	20.20'
C13	47°29'04"	45.00'	37.29'	S50°33'53"E	36.24'	C31	47°40'23"	53.00'	44.10'	S01°13'54"W	42.84'
C14	52°40'27"	45.00'	41.37'	S00°29'07"E	39.93'	C32	40°32'09"	25.00'	17.69'	N69°17'51"E	17.32'
C15	116°17'11"	25.00'	50.74'	N32°17'29"W	42.47'	C33	75°45'02"	25.00'	33.05'	N11°09'16"E	30.70'
C16	90°00'00"	15.00'	23.56'	S44°33'56"W	21.21'	C34	40°32'09"	25.00'	17.69'	N70°10'00"W	17.32'
C17	115°30'10"	19.00'	38.30'	N31°48'50"E	32.14'	C35	75°45'02"	25.00'	33.05'	N12°01'25"W	30.70'
C18	47°40'23"	53.00'	44.10'	S02°06'03"E	42.84'	C36	115°30'10"	19.00'	38.30'	N32°40'59"W	32.14'

Monument boxes with 24", #5 rebar with cap bearing the registration number of the responsible surveyor, to be set after construction is completed per Sec. 147-47 Aurora City Code and per Sec. 38-51-105-9(a & b) Colorado Revised Statutes.



Project No. WB0201 Date of Preparation: 03/07/07



NAPA SUBDIVISION FILING NO. 1 RECEPTION NO. A612491 BLOCK 1 LOT 1
ELTING SUBDIVISION FILING NO. 2 RECEPTION NO. 92127588 BLOCK 1 LOT 1
ELTING SUBDIVISION FILING NO. 1 RECEPTION NO. 96062678 BLOCK 1 LOT 1

PENDELTON ESTATE SUBDIVISION FILING NO. 1 RECEPTION NO. R1627468 BLOCK 1 LOT 6